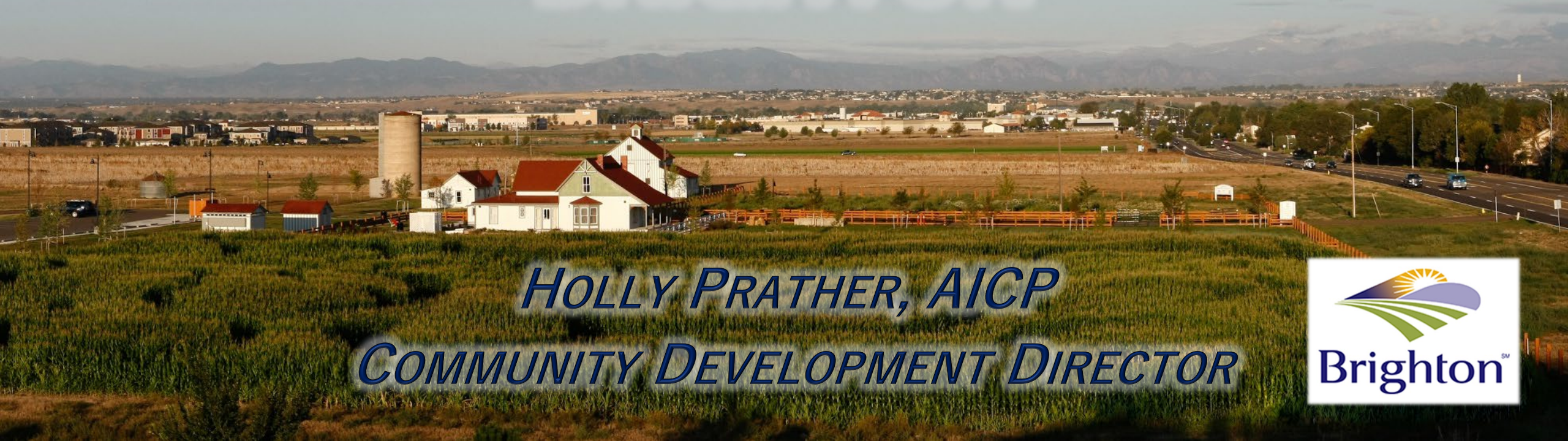


NEW CONSTRUCTION IN BRIGHTON

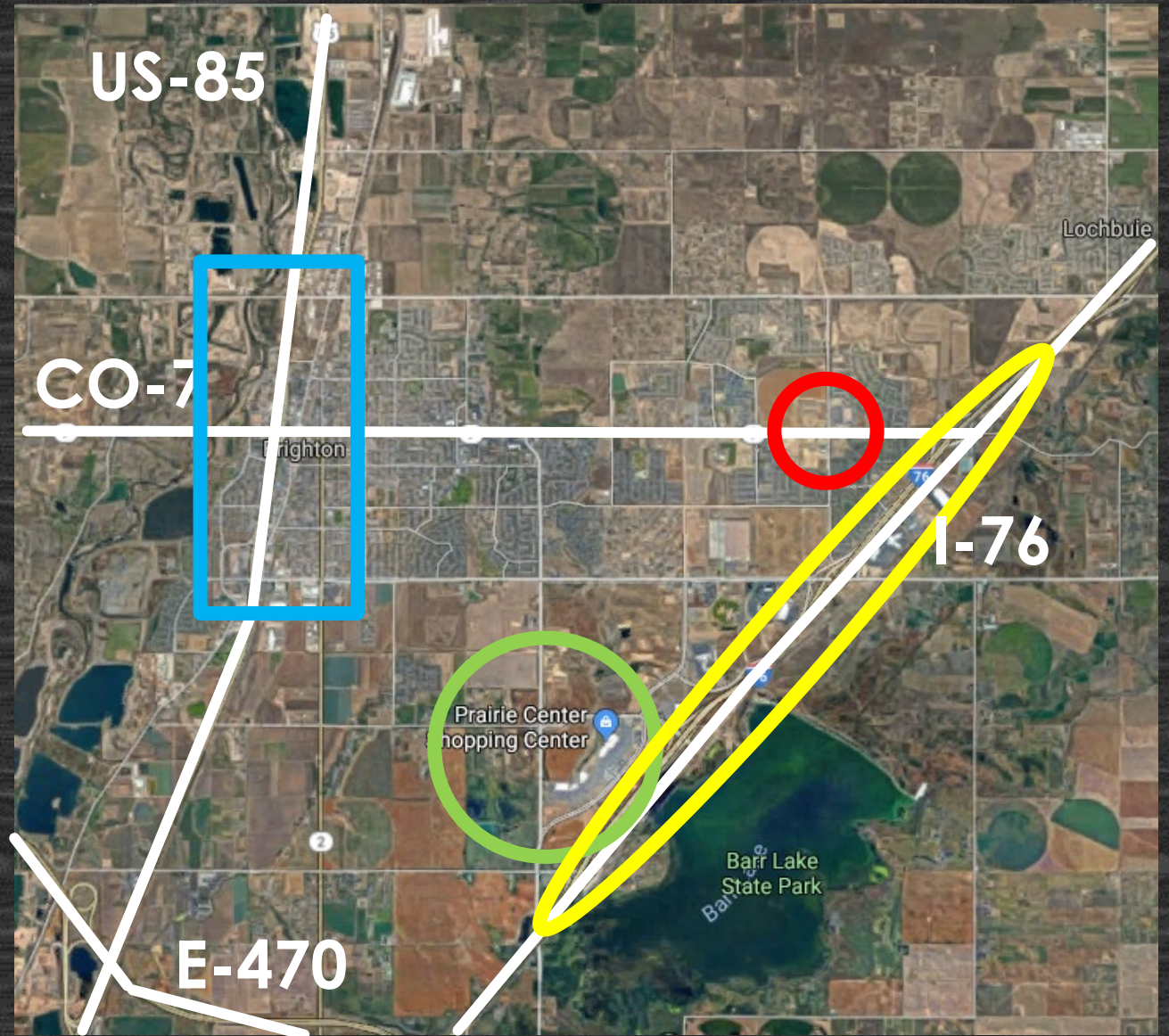


HOLLY PRATHER, AICP
COMMUNITY DEVELOPMENT DIRECTOR



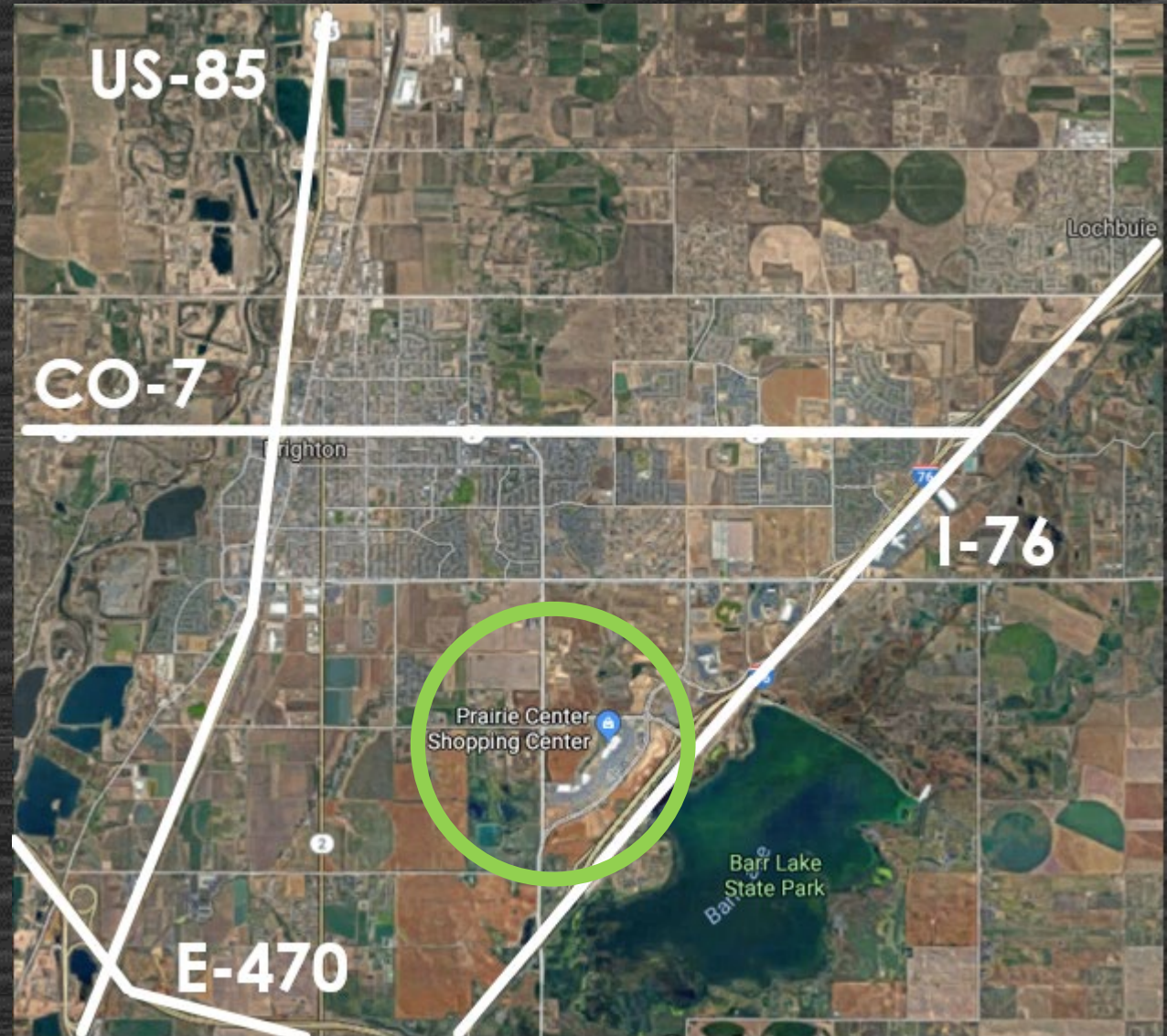
FOUR FOCUS AREAS

- *PRAIRIE CENTER*
- *50TH AND BRIDGE*
- *I-76 CORRIDOR*
- *US-85 CORRIDOR*



FOCUS AREA

- *PRAIRIE CENTER*



PRAIRIE CENTER



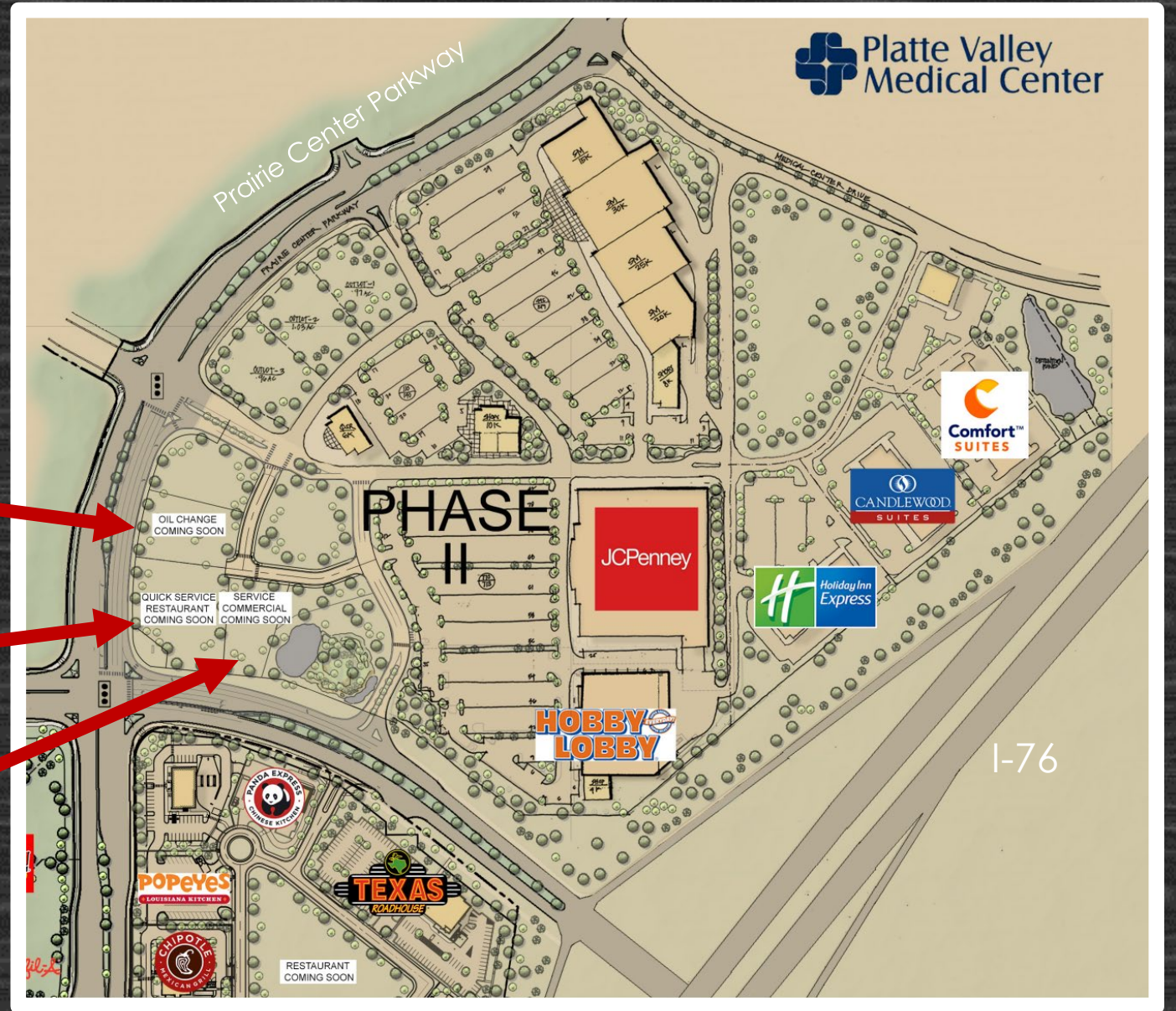
PHASE I

FUTURE PAD SITE



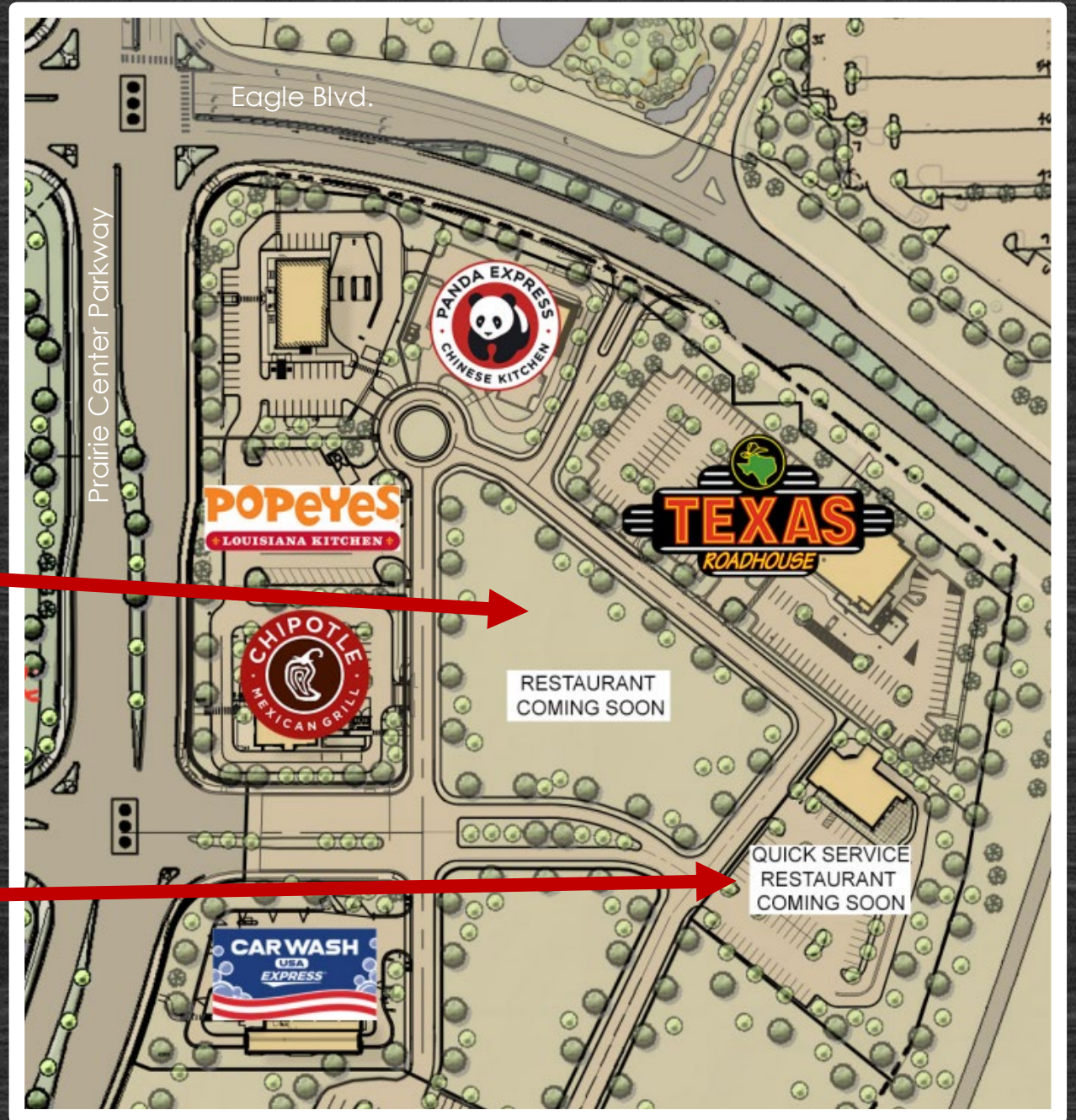
PHASE II

FUTURE PAD SITES



PHASE III

- FUTURE PAD SITES*



RESIDENTIAL: PRAIRIE CENTER

Existing and Under Construction

Existing:

Elements	288	units
Avilla	136	units
Village I	370	lots

Under Construction:

Canvas	192	units
Inspirada	77	lots



RESIDENTIAL: FARMLORE



RESIDENTIAL: FARMLORE




THE FARMLORE BARN




RESIDENTIAL: FARMLORE

Under Construction in Phase I		
Builders & # of Lots:		
Century Communities	75	lots
KB Home (Paired Homes)	82	lots
KB Home	40	lots
Taylor Morrison	60	lots
Total Lots in Phase I:		
	257	lots



MODEL HOME LOCATION MAP

Model homes at Farmlore are currently under construction with grand openings scheduled for the summer of 2024. The map below shows the under construction model home locations of each of the new home builders in Farmlore.



1

KB Home
The Villas

Low \$400s
2144 Farmlore Dr. | 720-589-5886
Low-maintenance paired homes with private side yards and rear entry 2-car garages.

3

Century Communities
The Colorado Collection

Pricing Coming Soon
1350 Farmstead St. | 303-268-8364
Featuring single-family homes with thoughtful layouts and designer finishes to fit your lifestyle.

2


KB Home
The Reserve Collection

Low \$500s
2155 Farmlore Dr. | 720-589-5886
Traditional single-family homes with individual homesites and 2-car garages.

4

Taylor Morrison
The Horizon Collection

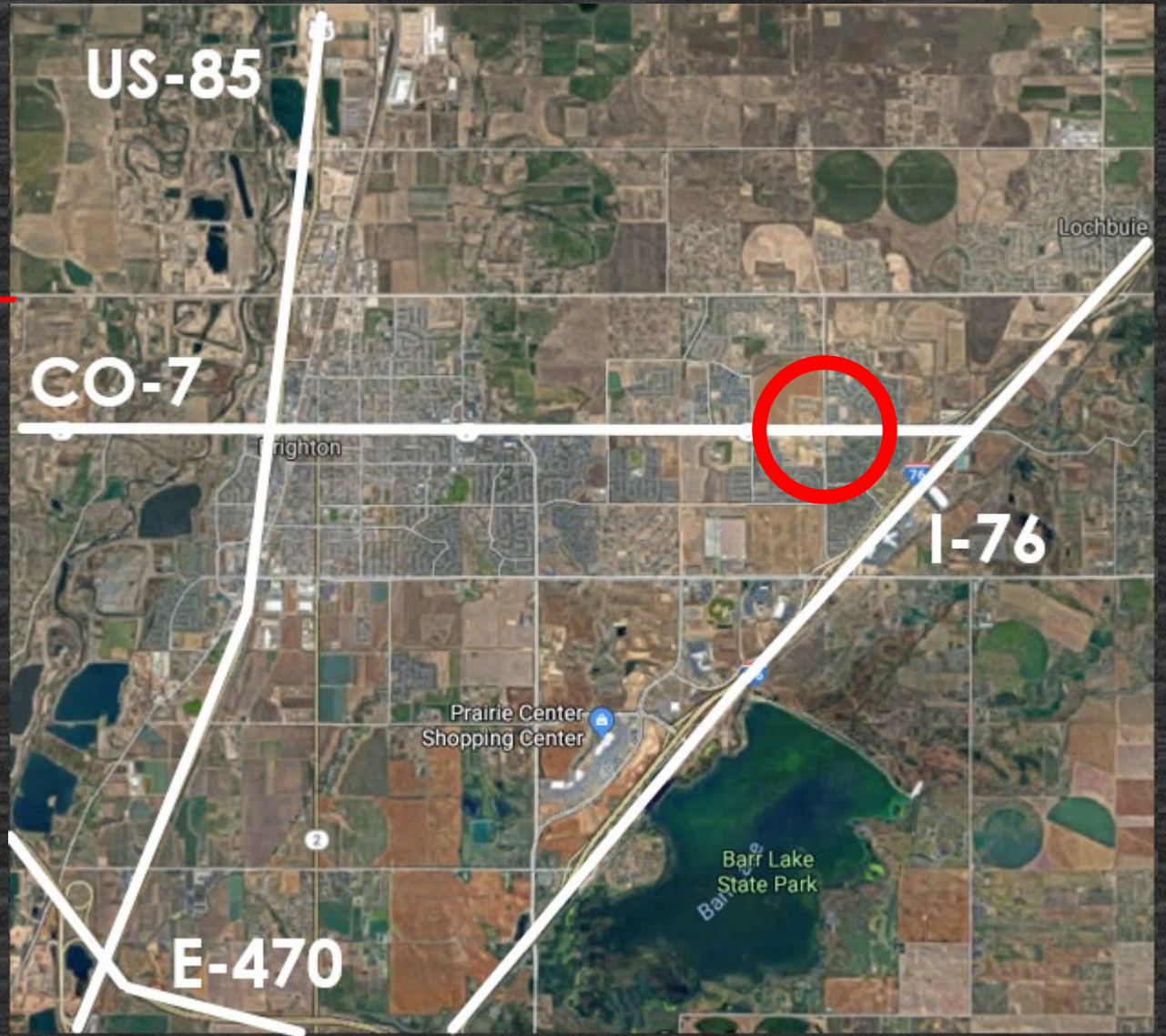
Mid \$400s to High \$400s
2121 Barnwood Dr. | 303-647-3860
Approachable single-family homes with spacious kitchens, up to 4 bedrooms, loft and flex space options.



FARMLOREColorado.com

FOCUS AREA

- *50TH AND BRIDGE*

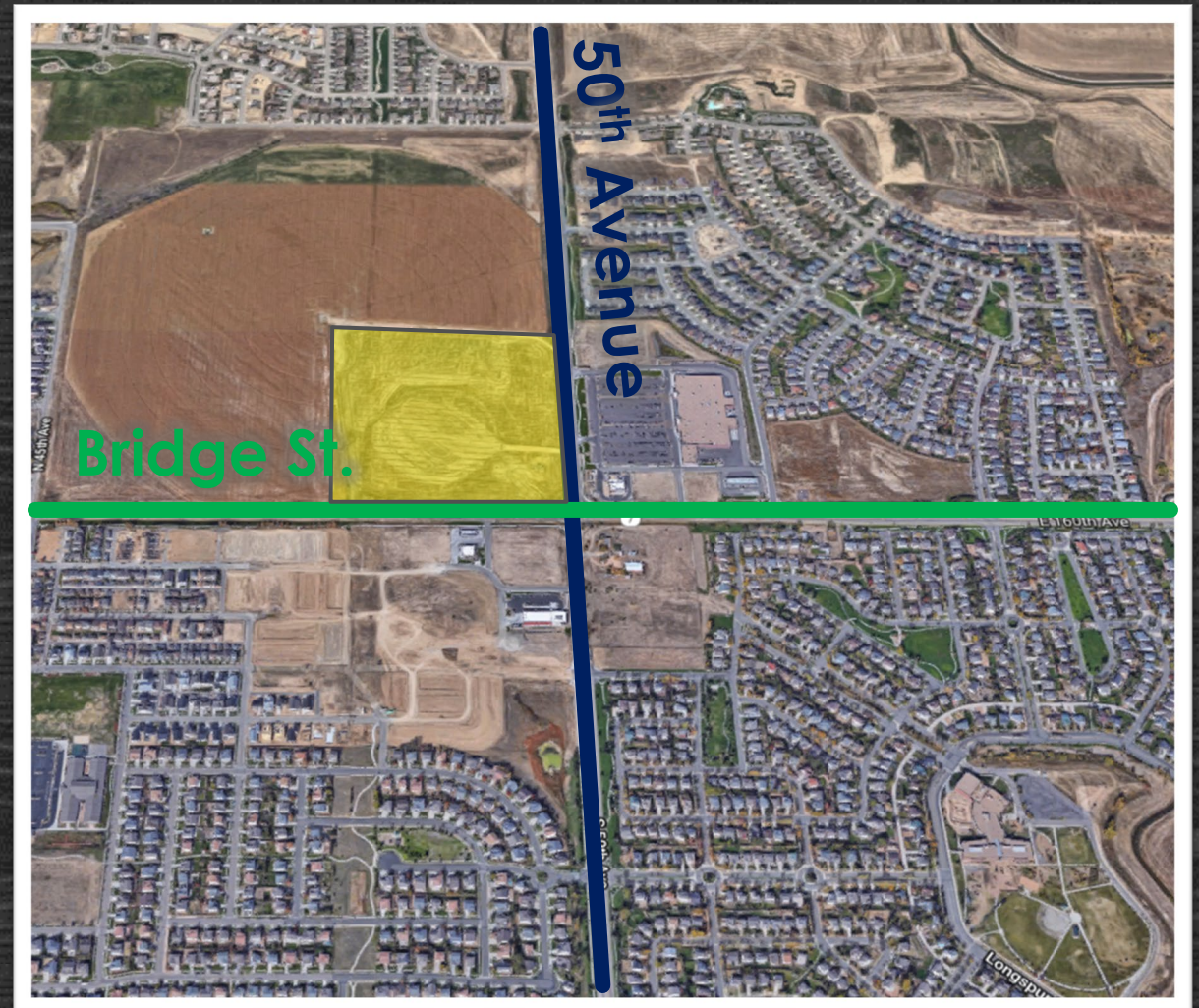


NEIGHBORHOOD COMMERCIAL AREA



NEIGHBORHOOD COMMERCIAL AREA

*NORTHWEST
CORNER*



RECENTLY OPENED

- *WATER TOWER
DENTAL CARE*



RECENTLY OPENED

- *SUPER STAR CAR WASH*



NEIGHBORHOOD COMMERCIAL AREA

*NORTHEAST
CORNER*



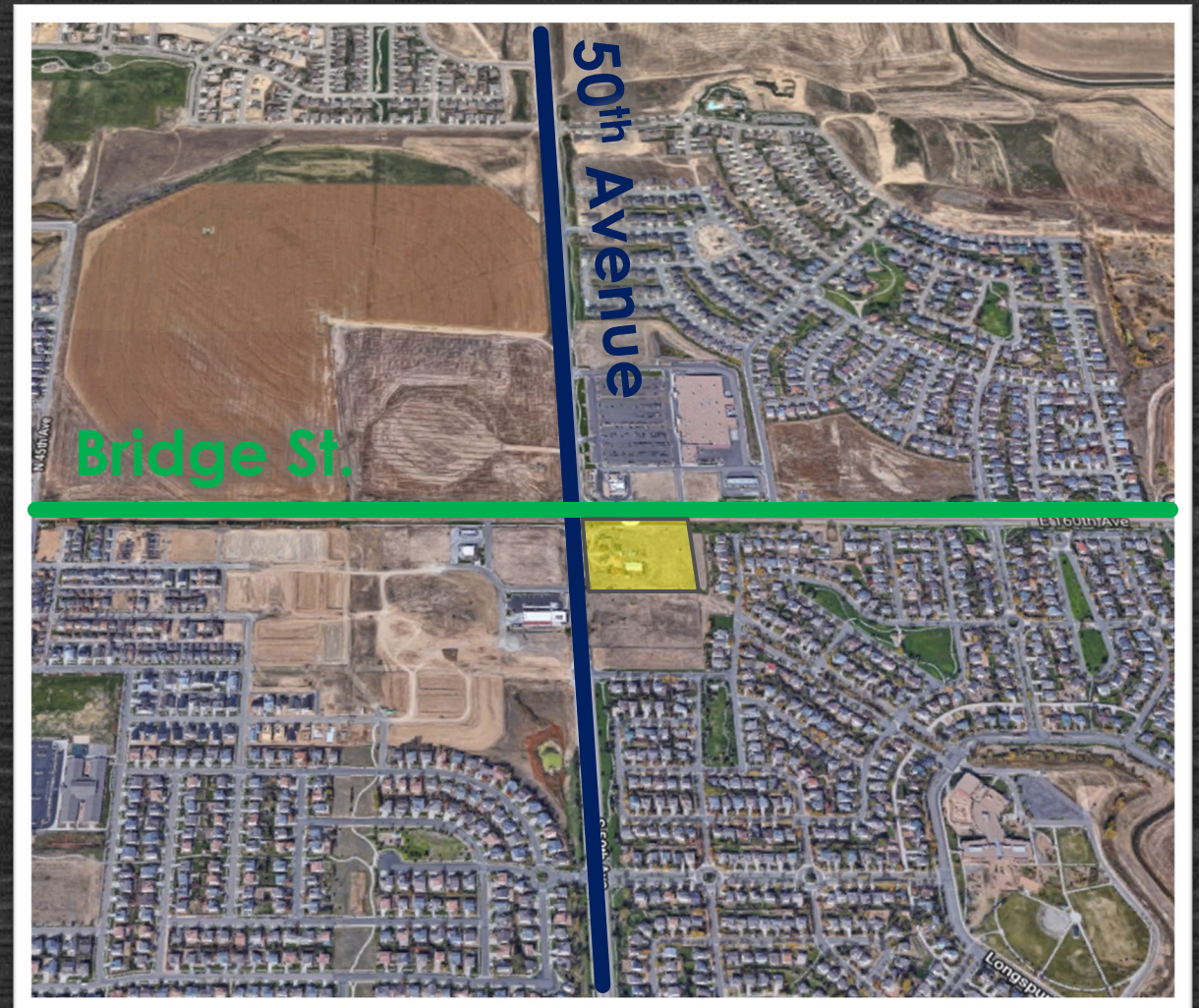
APPROVED FOR CONSTRUCTION

- *PET
SUPPLIES
PLUS*



NEIGHBORHOOD COMMERCIAL AREA

*SOUTHEAST
CORNER*



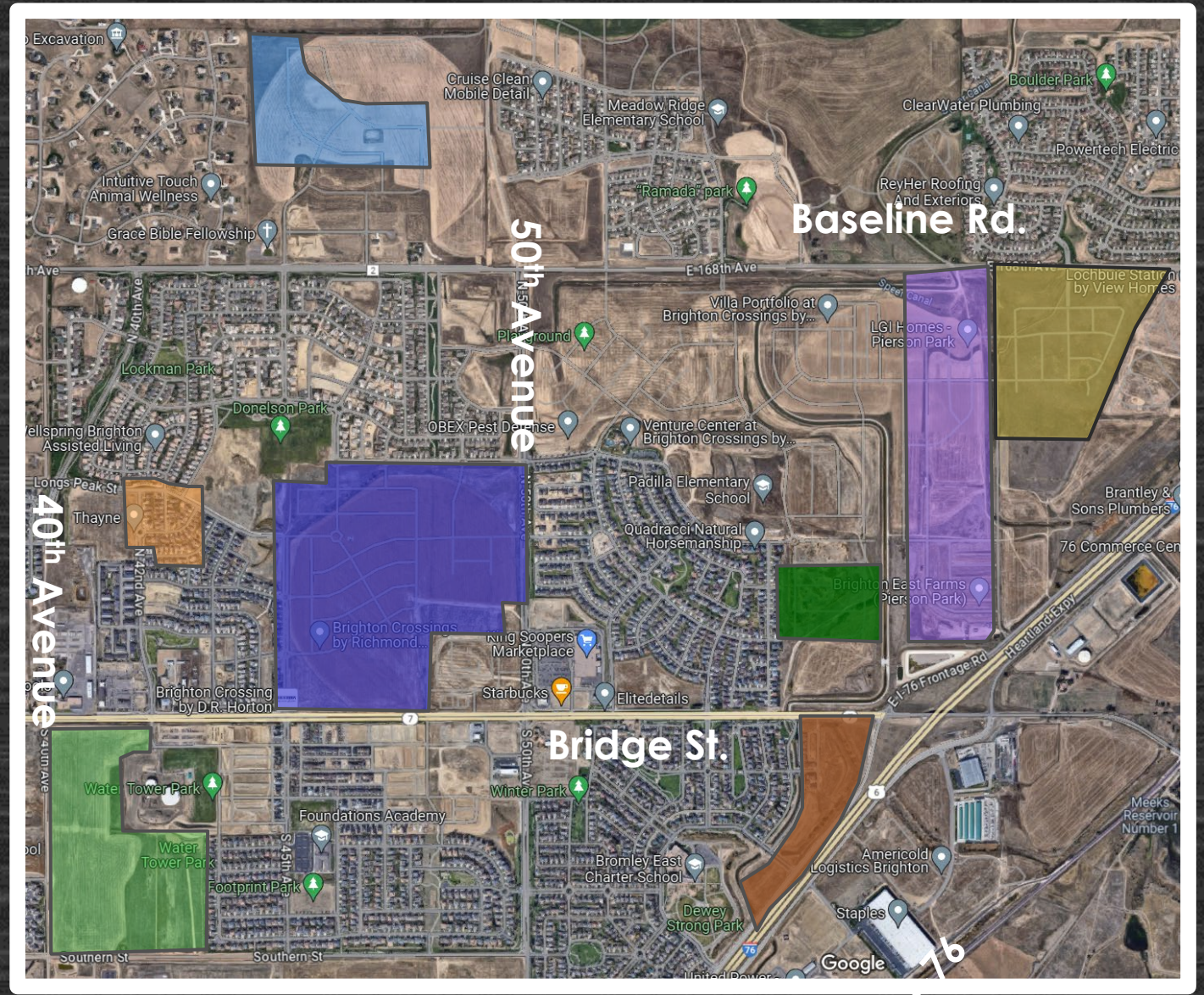
UNDER CONSTRUCTION

- *BELLCO CREDIT UNION*



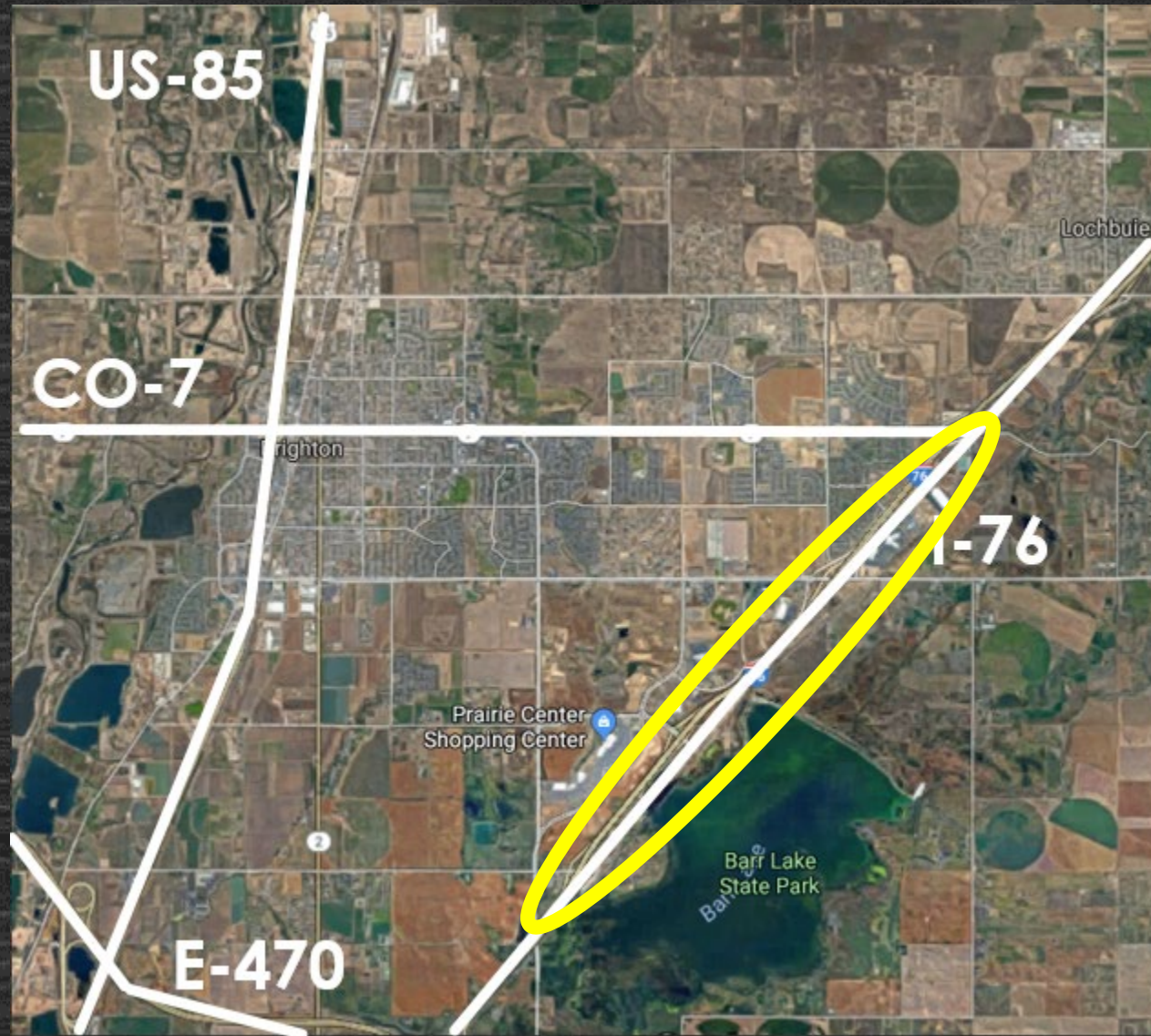
RESIDENTIAL

Proposed and Approved		
Approved:		
Brighton Crossing #7*	431	lots
Pierson Park	311	lots
Homestead	92	lots
Vistas at Donelson Park	288	units
Brighton Crossing #6	263	lots
Ridgeline Vista	336	units
Proposed:		
Brighton Crossing #2 (8 th Amendment)	95	lots
Sunflower	136	units
* Currently, includes two sites for multi-family (up to 418 additional units).		



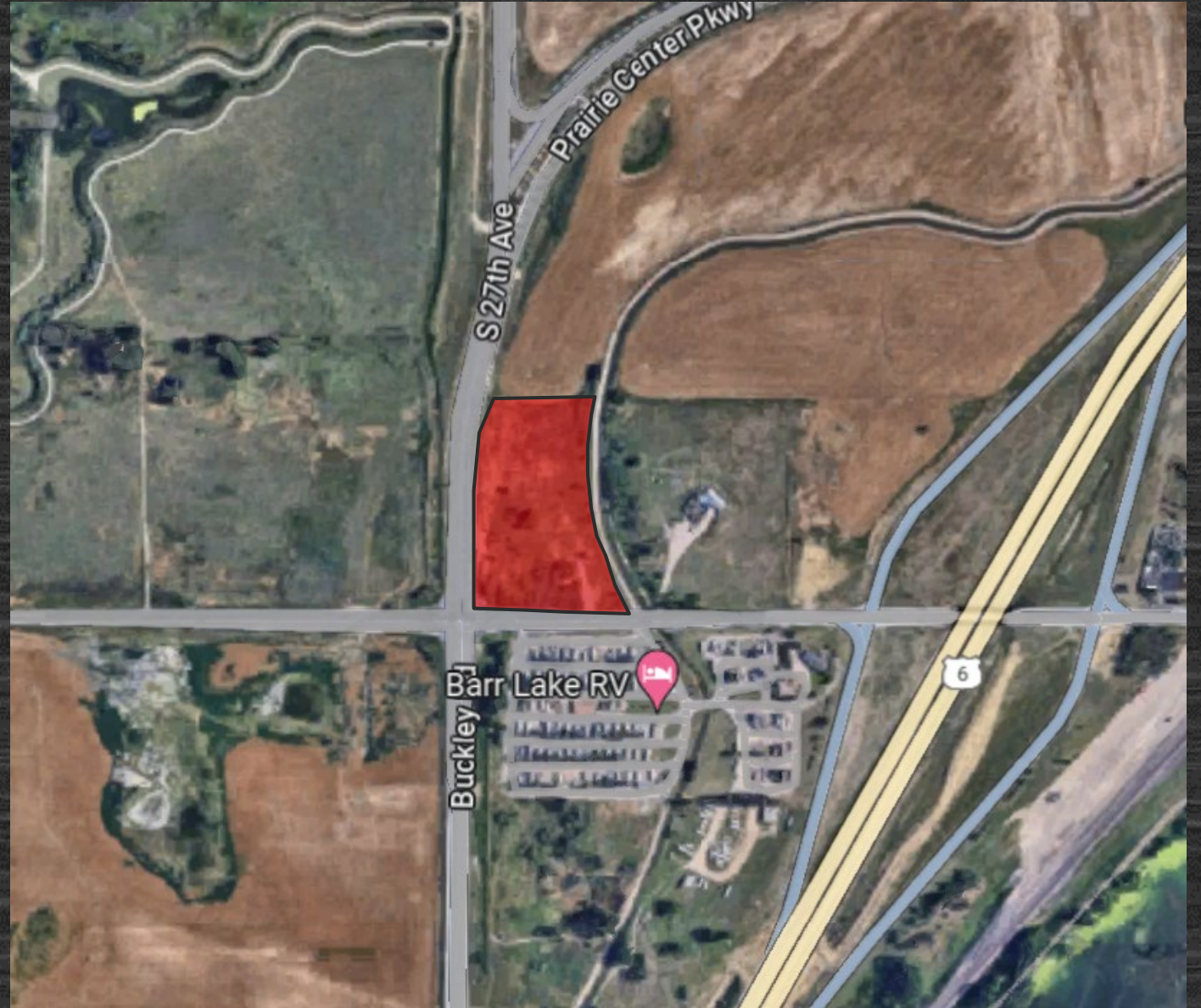
FOCUS AREA

- *I-76 CORRIDOR*



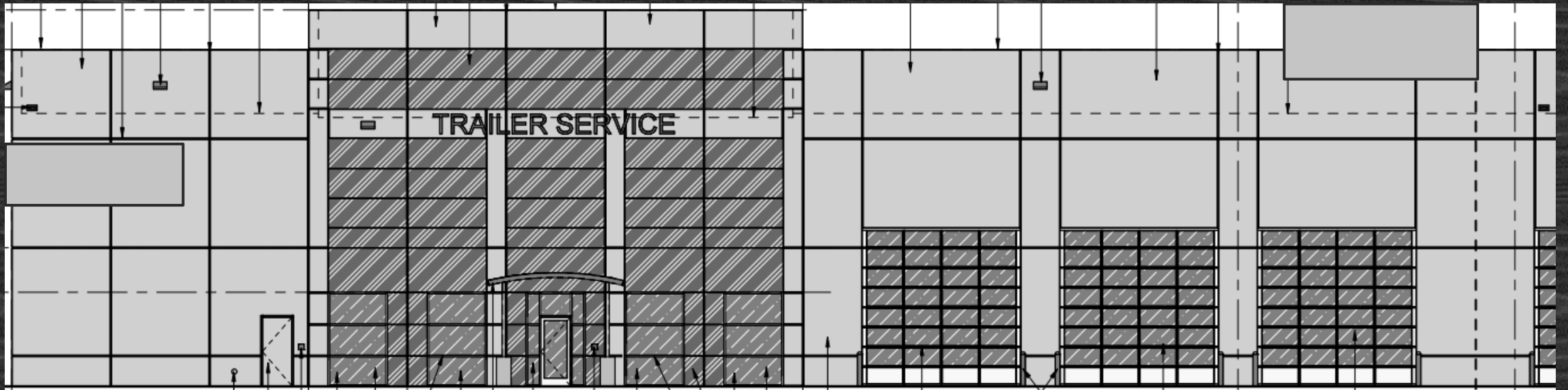
UNDER REVIEW

- *OTTEN
PROPERTY
ANNEXATIO
N & C-3
ZONING*



UNDER REVIEW

- *TRANSWEST
EXPANSION*



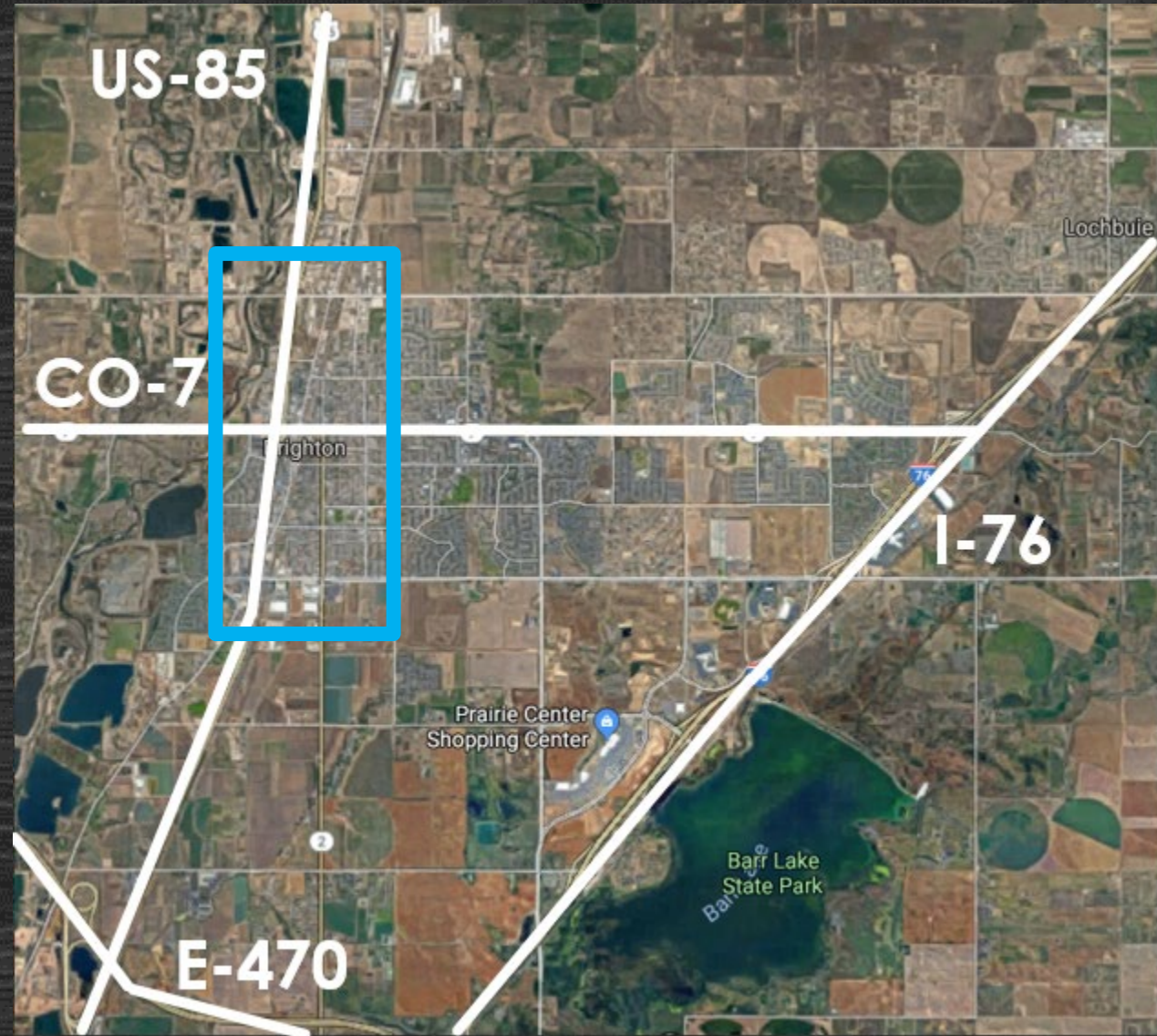
UNDER CONSTRUCTION

- *LOVETT 76*
LOGISTICS CENTER



FOCUS AREA

- *US-85
CORRIDOR*



APPROVED

- SOUTH MAIN*



Conceptual Cafe Elevation Example

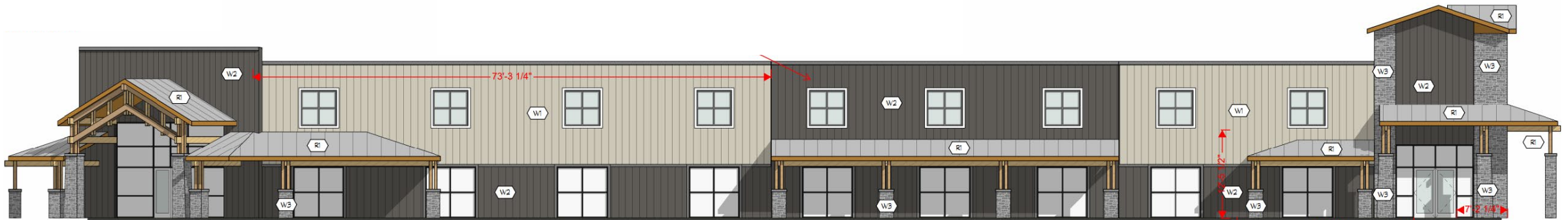
UNDER REVIEW

- *QUIKTRIP*



UNDER REVIEW

- *AGFINITY REMODEL*



UNDER REVIEW

- *THE MONARCH*



APPROVED

- *DUTCH BROS.*



APPROVED

- *LOVES TRAVEL STOP*

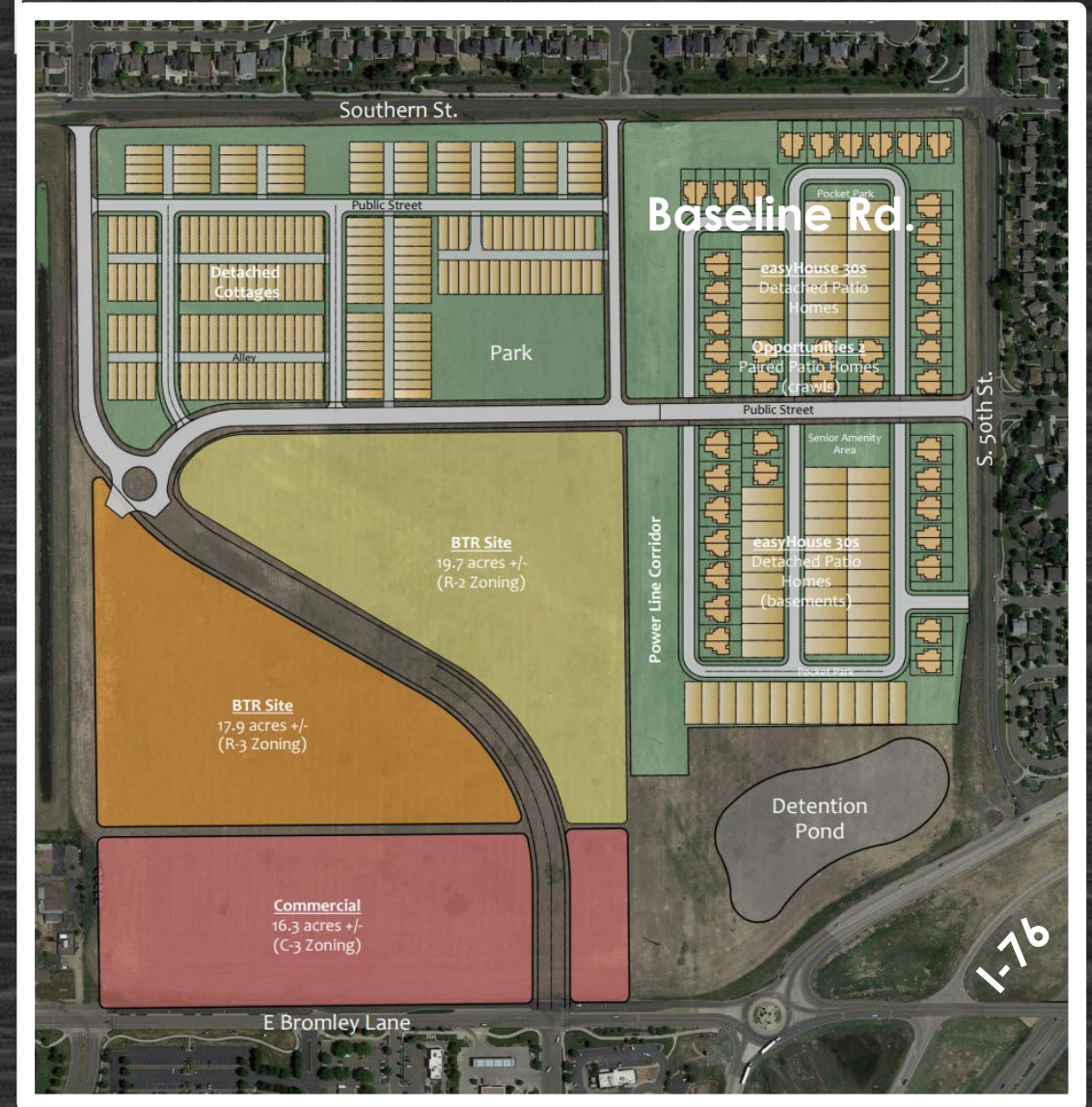




OTHER EXCITING DEVELOPMENT
RELATED NEWS...

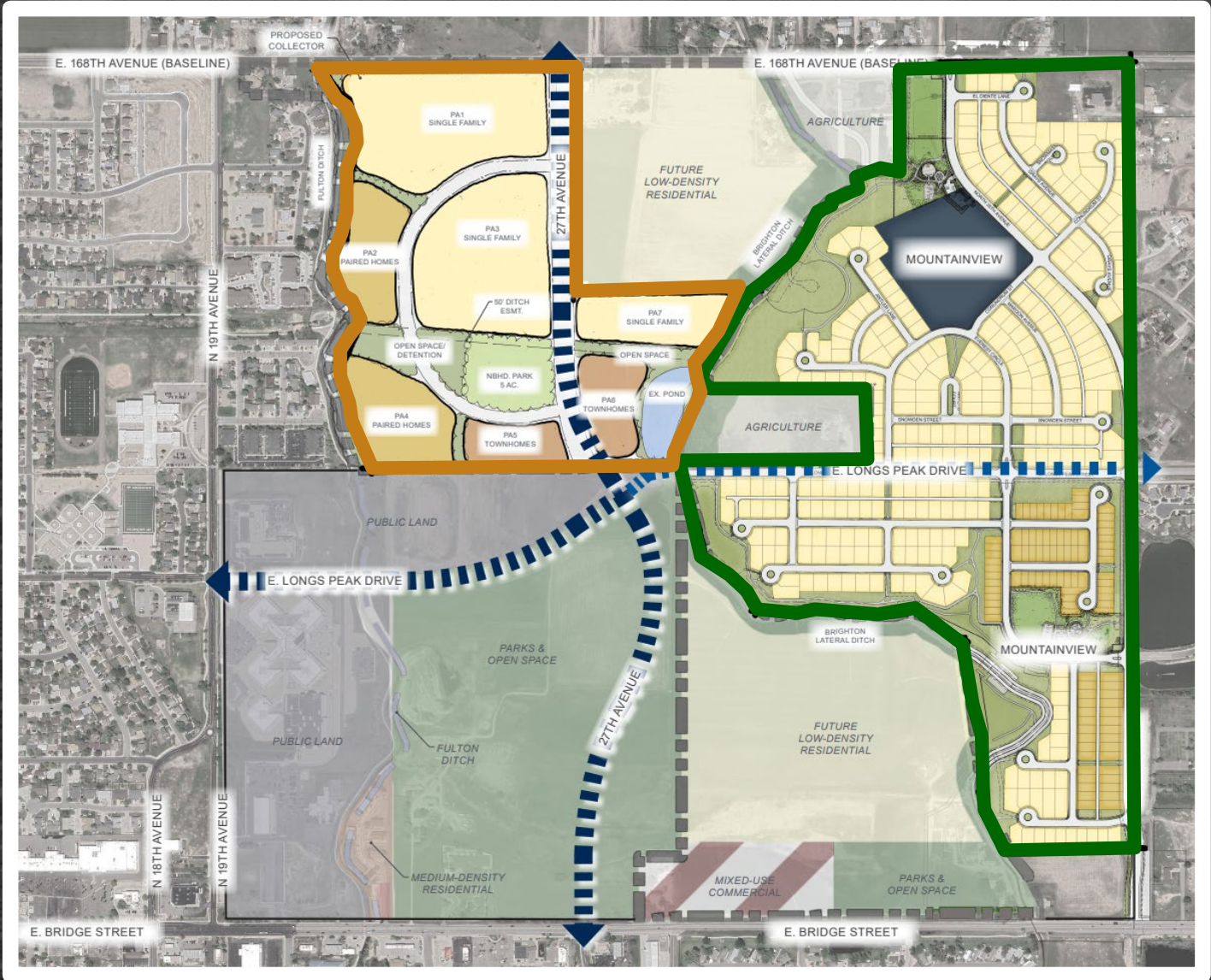
RESIDENTIAL: FUTURE

Proposed Mirasol Subdivision		
Residential:		
SFD and Duplex units	350	units
SFA and MF units	400	units
Total Residential:	750	units
Commercial:		
C-3 Zoning	16.3	acres



RESIDENTIAL: FUTURE

Future Subdivisions		
Residential:		
Mountain View	410	units
Grein Property	400	units
Total Residential:	810	units



CURRENT PROJECTS MAP

Current Projects | Community Development

Find address or place

South Main Redevelopment (1 of 3)

Project Name	South Main Redevelopment
Location	880 S. Main Street
Application Type	Subdivision Plan
Status	Under Review
Next Step	Public Hearing
Notes	
Development Type	Commercial
Attachments:	No attachments found

[Zoom to](#)

Legend

Development Type

- Commercial
- Mixed Use
- Residential
- Public
- Industrial

Brighton Boundary (City Limits)

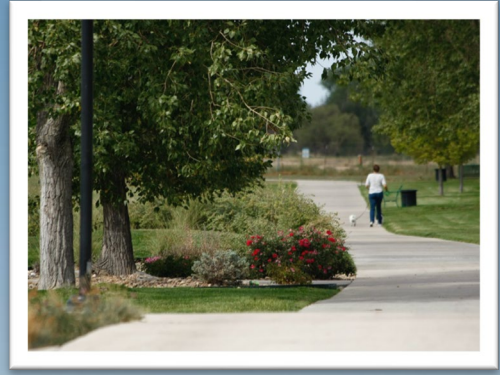
- Brighton Boundary

World_Hillshade

- World Hillshade

Esri Community Maps Contributors, © OpenStreetMap, Microsoft, Esri, HERE, Garmin, ...

<http://brightonco.gov/developmentmap>



THANK YOU!

HPRATHER@BRIGHTONCO.GOV

